

End-to-End

The Parish Magazine of Rivenhall and Silver End



Here is the latest member
of the choir at Rivenhall I
think we must all be
barking mad!

Someone said instead of
flowers why cant we have
some pictures of dogs.

This is Rufus by the way!
Our church dog at St
Mary's



The Following are our services For May 2023

7th May

9.30 am St Francis

11 am St Mary's

14th May

9.30 am St Francis

11 am St Mary's

18th May

7.30 pm St Mary's

21st May

9.30 am St Francis

11 am St Mary's

28th May

9.30 am St Francis

11 am St Mary's

5th Sunday of Easter

Holy Communion

All Age Worship

6th Sunday of Easter

Morning Prayer

Holy Communion

Ascension Day

Holy Communion

7th Sunday of Easter

Holy Communion

Matins

Whitsun (Pentecost)

Morning Prayer

Holy Communion

Church Contacts

All Contact should be Via the Churchwardens

Parish Priest Jane Quinton 01245 210930

Churchwarden Ann Clarke 01376 514825

Churchwarden Peter Hope 01376 502605

Email phope02@gmail.com

Rivenhall Contact Carole McCarthy 01376 512781

Silver End Contact Ruth Aitken 01376 583846

Rivenhall Website www.stmarysrivenhall.co.uk

St Francis Silver End Website www.st-francis.org.uk/

Contact the Editor 07904 235101 or phope02@gmail.com

‘VIEW FROM THE VILLAGES’ – Another King is crowned.....

Well, there has indeed been another wonderful ‘view’ for me to behold over the Easter period – including the best decorated Easter house front I have ever seen! J

But as I write this, (obviously hoping that your time was blessed over that period), I realise that although we have only just celebrated Easter (and as I sit looking at the 5 eggs I now have to eat!); by the time you actually read this, another celebration will be just around the corner - the coronation of King Charles III (by which time I should have eaten all those eggs!)

I don’t know what plans you all have to celebrate the event, or whether you will just take the opportunity that a couple of extra bank holidays presents..... But in Terling there has been much preparation to embrace the events suggested to mark the occasion.

So on the Sunday, the village will be enjoying a community ‘Coronation Big Lunch’, that Lord and Lady Rayleigh have very kindly opened up their grounds for. Whilst on the Monday, to mark ‘The Big Help Out’, there will be the opportunity for people to find out more about all the different voluntary organisations and clubs that take place in the area, with a chance to sign up and even help with something on the day.

Indeed, whatever your views on the monarchy and King Charles, surely such an opportunity for communities to gather and enjoy and support each other, has got to be good. And in fact reminds me, once again, of Easter, and of what Jesus Himself taught..... the true ‘servant King’, who wanted so much to bring all people together, to be one big world-wide community, helping, and living in peace and love with each other..... that He was willing to die to do so..... Such love indeed.....

So, however you spend it, I wish you all a great Coronation Weekend! **God bless Rev Jane x**

Readings and Collects for May 2023

7th May 5th Sunday of Easter

All Age Worship

Readings

Acts 7:55-60

1 Peter 2:2-10

John 14:1-14

Collect

Risen Christ,
your wounds declare your love for the world
and the wonder of your risen life:
give us compassion and courage
to risk ourselves for those we serve,
to the glory of God the Father.

14th May 6th Sunday of Easter

Holy Communion

Readings

Acts 17:22-31

1 Peter 3:13-end

John 14:15-21

Collect

Risen Christ,
by the lakeside you renewed your call to your disciples:
help your Church to obey your command
and draw the nations to the fire of your love,
to the glory of God the Father.

18th May (Thursday) Ascension Day

Holy Communion

Readings

Acts 1:1-11

Ephesians 1:15-end

Luke 24:44-end

Collect

Risen Christ,
you have raised our human nature to the throne of heaven:
help us to seek and serve you,
that we may join you at the Father's side,
where you reign with the Spirit in glory,
now and for ever.

21st May 7th Sunday of Easter

Matins

Readings

Acts 1: 6-14

1 Peter 4:12-14

John 17:1-11

Collect

Risen, ascended Lord,
as we rejoice at your triumph,
fill your Church on earth with power and compassion,
that all who are estranged by sin
may find forgiveness and know your peace,
to the glory of God the Father.

28th May Whit Sunday (Pentecost)

Holy Communion

Readings

Acts 2:1-21

1 Corinthians 12:3b-13

John 7:37-39

Collect

Holy Spirit, sent by the Father,
ignite in us your holy fire;
strengthen your children with the gift of faith,
revive your Church with the breath of love,
and renew the face of the earth,
through Jesus Christ our Lord.

The 50/50 Club April 2023 winners

1st Liz (Silver End) 2nd Mrs S Donnell 3rd Mrs S Brown

RIVENHALL PARISH COUNCIL

NOTES OF MEETING HELD ON 4TH APRIL 2023

At RIVENHALL VILLAGE HALL

These notes are an abridged version of the minutes

Present: Cllrs. Abbott (Chairman), Wright (Vice-Chairman), A'Lee, Elliott, Prime and Turner.

Also present: Parish Clerk and ECC Cllr. Playle.

Chairman's Report

There was no report due to the election purdah period.

Public Forum

ECC Cllr. Playle reported on items relating to local highways problems and the A12 widening and detrunking proposals, and he was advised by parish councillors of the concerns about the repeated flooding of local roads.

Matters for Discussion

Annual Report

The content of the Annual Report was agreed for publication – 400 copies - with distribution prior to the meeting on 12th May 2023.

Grant request re defibrillator at Rivenhall End

Grant request yet to be received.

Flooding of local roads

The Chairman has again reported (twice and with photos) to ECC the urgency of highway work needed to prevent the flooding of local roads. It was agreed that a formal letter be sent to the ECC Chief Executive listing the various sites that continue to flood within the parish and requesting that action be taken to rectify the faults that cause the flooding and inconvenience to local residents, motorists and cyclists.

Highway Maintenance

BDC dates for street gully cleaning are 19th April '23; 24th July '23; 24th October '23 and 26th January '24.

BDC has been requested to clear the footways of silt left by the recent flooding in Rivenhall End (Post meeting note – work completed).

The Clerk and Chairman will liaise to write to National Highways regarding the continual number of crashes, including damage to local property, due to the high speed of vehicles leaving the A12 into Oak Road. Additional advance warning signs are required informing drivers of the short and acute exit from the A12 into Oak Road.

General Maintenance

The vandalised A12 bus shelter has not yet been removed by the maintenance contractor – the Clerk will send a reminder.

Planning Applications

23/00479/FUL: Retention of mobile home and siting of 6 shepherd's huts – Colemans Cottage, Little Braxted Road. A "no comments" letter sent to BDC on 18th March 2023.

Ongoing Planning Issues

A12 to A120 widening

The council's formal view on the DCO has been communicated to ECC but they continue to press ahead with a completely different plan.

Bradwell Quarry

An agreed reply has been forwarded to ECC re the Pre-Application Request for the construction of a replacement bridge over the River Blackwater. The parish council broadly supports this proposal as it should remove any need for waste site related HGVs to come through local villages.

Rivenhall Airfield Major Waste Site

The Condition 66 Appeal has been postponed until October 2023.

Colemans Quarry

An agreed response to the proposal to move the quarry processing area to Appleford Farm was sent following the Community Consultation Information Event held on 10th March 2023.

Highways Panel

The 23rd March meeting has been postponed until 19th April 2023.

Finance

To agree the 2022/23 Final Accounts

As both the parish council's annual gross income and expenditure during 2022/23 did not exceed £25,000, the External Auditor's Certificate of Exemption and the Annual Governance Statement 2022/23 were agreed and signed by the Chairman. The accounts for that year will be internally audited ready to be finally signed off at the May meeting.

Information exchange and items for the May agenda

The License/Consent form for the 5 roadside verges rewilding areas has been agreed by ECC and will be signed by the Chairman and Clerk subject to satisfactory settlement of minor queries by the Chairman.

Dates of future meetings

12th May and 6th June at Henry Dixon Hall, both starting at 7.30pm.

THE WITHAM MOTHERS UNION

Thursday 25th May 2pm. Witham Mothers' Union and friends will meet in St Nicolas Church Hall to listen to Madeline Rainbow speaking about when she was a Blue Badge Guide.

For more information about the Mothers' Union contact Lynette Abbott on 01376 512586 or Joan Barrett on 01376 514617

Rivenhall Village Hall,

located in Church Road, Rivenhall is available for hire by local clubs, organisations and residents for numerous activities and events including weekly/monthly classes or meetings, social functions, parties, fundraising events, wedding receptions, coffee mornings and much more. The hall has a well-equipped kitchen, toilet facilities including disabled and a level access from the car park. Clubs and organisations currently using the hall are:

Mondays: Under 5s storytelling mornings, Karate late afternoons and

Scottish dancing - 2nd, 4th and 5th Monday evenings.

Gardening Club 2nd Tues; Yoga Wednesday evenings; Carpet Bowls Thursday evenings.

Saturday afternoons - 7th Day Adventist Church

If you are interested in hiring the hall or joining any of the above groups, please contact the bookings secretary for further details by e-mailing:

rivenhallvillagehall@gmail.com

For more general enquiries, please e-mail:

secretaryrpf@gmail.com

Pentecost Bonfire

Before lockdown, for many years we had a Bonfire service in St Mary and All Saints' Churchyard, Rivenhall. These were of course paused during lockdown, and last year when it would have resumed, it coincided with the Queen's Jubilee weekend, so it was postponed again. This year, however, we are delighted to be resuming this very informal but moving

service.

It will be on **Saturday 27th May at 8pm**, in St Mary's churchyard. Plenty of parking in the school and in the village.

A short service with hymns and readings, and then we light the fire - which is stunning!

We serve jacket potatoes and sausages - very simple! With



vegan and vegetarian sausages and cheese also provided. Tea and coffee will be offered, but please bring any other drinks that you may like. Chairs will be provided, but they are not the most comfortable, so please bring your own for comfort!

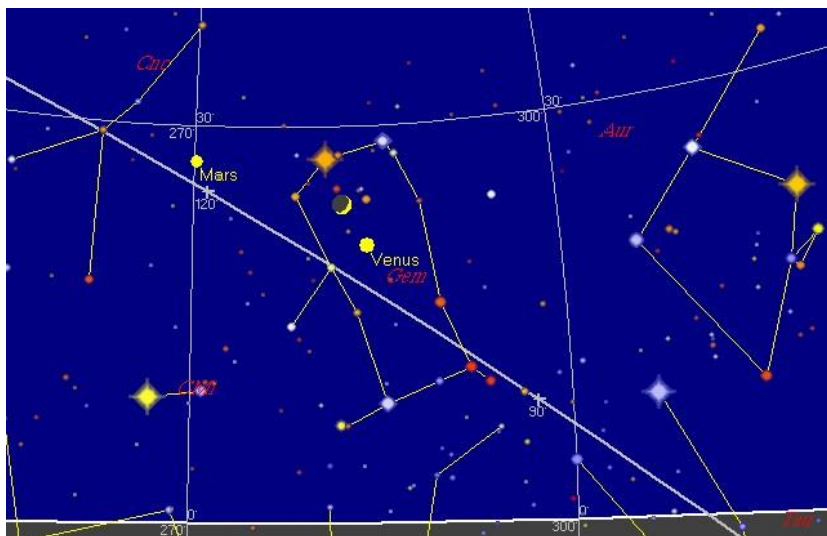
There is no charge for this evening, but there will be a collection for charity. **Please let Ann know if you would like to come and your dietary needs, if any, so that we may cater for everyone.**

annxclarke@outlook.com, 07713151165.

Sky Notes May 2023

By the last week of May the Sun is setting after 9pm BST and the nights are once again becoming short with twilight lasting well into late evening.

There are 3 defined types of twilight - civil, nautical and astronomical. From 22nd May, astronomical twilight persists throughout the night and will do so for about the next 2 months.



Venus is a brilliant object in the West during the late evening and with a clear horizon can be seen as late as midnight this month. Through binoculars or a small telescope it shows a half phase.

Mars is in the same part of the sky as Venus, to the left of the 'Twin Stars' of Gemini and these four objects will be joined by a young crescent Moon on 23rd May, best seen at around 10pm (see map).

Full Moon this month is on the night of the 5th/6th May and is now much lower in the sky than during the winter, staying less than 20 degrees altitude above the southern horizon all night.

NASA has announced the crew of the Artemis II mission to the Moon, which is due to launch in November 2024. Although the crew of four (3 men and 1 woman) will not land on the Moon, they will fly around it, becoming the first humans to leave low Earth orbit since the Apollo 17 mission in 1972. Artemis III is due to land on the Moon.

Whilst private companies are increasingly involved in space launches, it is only NASA that so far has successfully taken humans beyond low Earth orbit, using the Saturn 5 rocket system for the Apollo missions and now the Space Launch System, with which NASA aims to build the first Moon base and the first Moon-orbiting space station. Elon Musk says his SpaceX Starship will take large numbers of people to Mars in the future but its first full test launch in April resulted in its total destruction in an explosion a few minutes after lift-off, severe damage to its launch pad and reports of environmental damage for miles around. *Sky Watcher*

RIVENHALL VILLAGE FETE SATURDAY 15th JULY

Rivenhall village fete will be on green on the afternoon of Saturday 15th July between 2:00 pm and 5:30 pm. The attractions will include, stalls, musical entertainment, cream teas, a BBQ, raffle.

The fete marks the 25th year of the Rivenhall Millennium Committee and its various charitable acts. This date was chosen to coincide with the Rivenhall Gardening Club's annual show in the village hall, so you can enjoy two local village even

THE ROYAL WEDDING - 6th to 8th May Best decorated house / garden in Rivenhall

On coronation weekends it has been a British tradition to erect bunting on houses and place decorations in front gardens. So the Rivenhall Millennium Committee is running a three-day best decorated house / front garden competition on Saturday 6th May through to Monday 8th May. Judging will take place over those three days. Entry is £1.00 per household and entry forms have been delivered to all homes in the village (and can be downloaded from the Rivenhall Community Facebook page)

The prize-winners will be notified on the afternoon Monday, 8th May (and details will also be posted on the Rivenhall Community Facebook page).

End to End Nature Care.

On 15th April a group of us headed to Newmarket to walk part of the earthwork known as the Devil's Dyke, a large linear bank and ditch which stretches for several miles from the village of Reach in the northwest to Woodditton in the southeast and crosses the Newmarket horse-racing courses. We were met there by ex Rivenhall Rector Nigel Cooper, who explained some of the history of the earthwork, thought to be Anglo-Saxon in age and forming part of a series of defensive structures across the plain separating the wet fenland to the north and ancient woodland to the south, between them effectively creating a barrier between the east and west, thought to be a defensive structure created by the Angles to the east.

The structure is impressive in scale, not just its length but also the extent of the bank and ditch, in places creating a differential of over 10 metres between the bottom of the ditch and the top of the bank. The underlying geology is chalk and through a combination of grazing (mainly sheep and rabbits) and cutting, the structure is covered mostly grassland and light scrub, promoting the presence of several chalk specialist species. Our plan was to view the spring-flowering Pasqueflowers (*Pulsatilla vulgaris*) and Nigel quickly guided us to several patches of the impressive yellow-centred purple blooms. It being early in the year, most other plants were yet to flower but courageous efforts were made to identify several more chalk-loving species from the early green growth alone.

Several insects were noted, including at least three ladybird species and a number of solitary bees and flies attracted to flowering fruit trees, notably Cherry. The weather in the morning was reasonably warm and sunny so butterflies were on the wing, with Peacock, Speckled Wood and plenty of Brimstone being seen. The chalky conditions were also good for terrestrial molluscs of course; the ditch-side of the bank in particular was densely scattered with many shells of dead snails as well as live individuals, notably the chalk specialist *Helicella itala*. On the bird front, as well as resident species such as Great Tit, Magpie, Jay and Yellowhammer we spotted and heard migrant Chiffchaff, Willow Warbler and a handful of Barn Swallows.

After a picnic lunch followed by hot drinks at the Jockey Club tea-room, we walked north along the section of the Dyke which passes between the two racecourses at Newmarket. At our furthest point from our vehicles we were regaled with lightning and thunder, after which the heavens opened and we trudged back in steady rain. Spirits were restored, however, by a very enjoyable afternoon tea at the Coopers' house in Isleham. Despite the soaking, a very enjoyable day was had by all. Our warm thanks are extended to Nigel and Bridget Cooper for facilitating the day and for the delicious tea.

Summer Evening Activity Schedule:

We have now started our weekly Wednesday night meetings for the summer season. Forthcoming events are listed below; as you can see, there is a variety of activities. The entire summer schedule of activities can be found online at www.e2e.silverend.org. We also have a Facebook group "End to End Nature Care" where any recent wildlife sighting or news is always welcome to be posted.

Alternatively if anybody has any questions about the group and our activities then I can always be contacted on simon@e2e.silverend.org or 07947 388180.

03 May	19:00	Monitoring spring fauna and flora at Rivenhall Churchyard.
10 May	18:45 for 19:00	Tiptree Heath for Nightingales. Meet at 18:45 at Stovern's Hall Farm to car share or at 19:00 at the Heath car park (TL882148).
17 May	19:00	Botanising Rivenhall Thicks. Meet at the sugar-beet stand by the sharp bend in the Rivenhall/Silver End road (TL822187).
24 May	19:00	Plants & birds at Silver End. Meet at the Western Arms car park.
31 May	18:30 for 19:00	Chelmer Blackwater Reserve, Maldon. We should be guided by local naturalist John Buchanan (author of "Wildlife of Maldon" published in 2022). Meet at 18:30 at Stovern's Hall Farm to car share or at 19:00 near the reserve access at the far end of Maldon Tesco's car park.
07 June	18:30 for 19:00	Wivenhoe park trees (University of Essex) with Maria Fremlin. Meet at 18:30 at Stovern's Hall Farm (TL825172) to car share or at 19:00 at the Constable Building car park (CO4 3FA or TM033241) on the campus.



A fine example of a Brimstone Butterfly

The Devils Dyke
Cambridge (all
pictures on this
page). go with
the Nature Care
article.





Residents of Foxmead will be amazed to see they have been chosen for a wonderful rainbow display.

Yoga Moments



Hatha Yoga class

MONDAY 9.30AM
WITHAM BRITISH LEGION HALL

WEDNESDAY 10.30AM
KELVEDON INSTITUTE (Small hall)

YOGA RETREATS
(Contact Mine for details)

(suitable for all levels including beginners)

Yoga can bring many benefits to your life

- Build strength and flexibility
- Ease stress
- Enables restful sleep
- Helps with many health issues

Call Mine Hilmi on 07811 203 981
or email mineyogamoments@gmail.com
to book your place

MONDAY 7PM
WITHAM METHODIST CHURCH

WEDNESDAY 7PM
RIVENHALL VILLAGE HALL

PRIVATE 1:1 CLASSES
CHILDREN'S YOGA COMING SOON




WITHAM HALL BY YOGA TEACHER

WWW.YOGA-MOMENTS.CO.UK

TONE YOUR BODY, RELAX YOUR MIND

**HELP WITH
FUNERAL ARRANGEMENTS
RICHARDS
FUNERAL SERVICE**



01376 513114

78 Newland Street, Witham, CM8 1AH

From advice on how to register a death to making all the arrangements, we're here 24 hours a day.

Members of the National Association of Funeral Directors

SpeedyBroadband.co.uk
***Sick Computers my
Speciality***

- Home Networking Problems Sorted Out
- Computer Viruses Removed
- Operating System Upgrades
- Upgrade to Windows 10

**FOR YOUR FREE SURVEY AND
QUOTATION CONTACT**

Peter Hope

Peter.hope@speedybroadband.co.uk

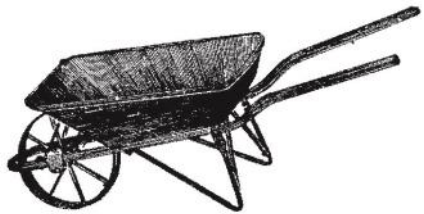
Tel: 01376 502605

Mob: 07904 235101

Website

www.speedybroadband.co.uk

**Ya Garden
Cares**



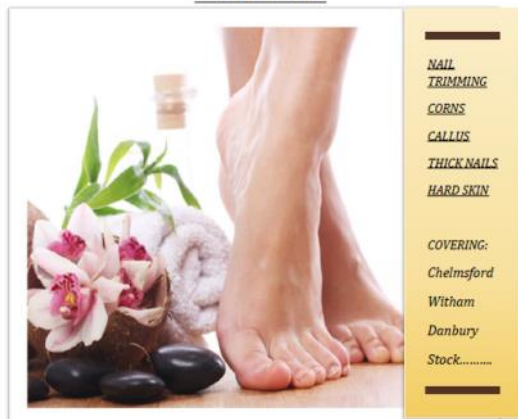
**Thorough Attention on
Bed Maintenance,
Mowing & Clearance**

**Telephone
Barry: 07732337626**

FOOT HEALTH PRACTITIONER



HOME VISITS



NAIL TRIMMING

CORNS

CALLUS

THICK NAILS

HARD SKIN

COVERING:

Chelmsford

Witham

Danbury

Stock.....

JAMES NEWMAN (MCFHP,MAFHP)

TELEPHONE: 01376 519036

MOBILE: 07793971351



PC Doctor Operations Limited

For all your computer requirements including:

Virus prevention, detection & removal
Broadband, Networking, Wireless & Firewall set up
Email & SPAM filtering
Hardware Repairs & Upgrades
Software Faults & Crashes
Backup Solutions & Data Recovery
Software Installation & Removal
Hardware & Software Supplied
Website Management • Computer Training

**Health Checks
£39.99**

Office: 01621 891064 • Mobile: 07990 565336

Email: support@pcdocops.co.uk

Website: www.pcdocops.co.uk

Monthly subscription service available to provide complete "peace of mind" and allow you to spread the cost of your IT requirements.

Please contact for further information.



**CARING FOR THE PETS OF WITHAM AND
THE SURROUNDING AREA FOR 30 YEARS**

**Late night surgery Monday's
and Wednesdays till 7.30pm**

Surgery Opening hours:-

Monday to Saturday for appointments

Monday and Wed 8.30 am –7.30 pm

Tues, Thurs & Fri 8.30 am—6.30 pm

Sat 8.30 am to 12 Noon

Tel: 01376 500038

www.brookendvets.co.uk

REYNOLDS

CARPENTRY SERVICES

**For all Carpentry, Joinery
& Cabinet Making Requirements**

CSCS Registered

30 Years Experience

4 Years Apprenticeship

City & Guilds and

Advanced City & Guilds Qualified

Free estimates – No obligation

All building work considered

Can also make items to order

also

**'curtain poles, tiling, flat packs,
kitchens, doors, sheds etc, no jobs
too small'**

Contact

07889 110962

Answer phone at other times

ANGLIA TREE SERVICES

Specialist tree surgery

Residential & Commercial Customers

CROWN REDUCTION • FELLING • TOPPING

HEDGE TRIMMING • ALL GARDEN WORK

STUMP GRINDING

For a quick, tidy and friendly service call:

Tel: 01621 892831



7 DAYS A WEEK • EMERGENCY SERVICE AVAILABLE • FULLY INSURED



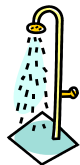
Philip Little

Property Maintenance Magician

Local service at local prices

Knowledgeable and friendly

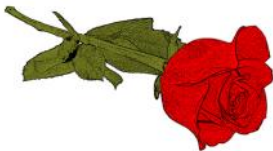
07973 129808 or 01376 515257



Serving the Local Community for over 125 Years

G. COLLINS & SONS

Funeral Directors Ltd



30 RAYNE ROAD, BRAINTREE, CM7 2QH

01376 342266

4 THE STREET, WHITE NOTLEY, CM8 1RH

01376 583750

WWW.GCSFD.CO.UK

Beautiful Rooms For Rent In Witham & Braintree

We have 4 Lovely houses
2 in Witham—2 in Braintree
With and Without en-suites
£90—£130 per Week

(All inclusive of Rates, Light, Heat, and with Broadband)

See our Website:- www.jbwpartners.co.uk

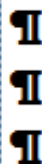
Or Call

John
07850 161629

Mavis
07714 579783

Michelle
07966 323914

Jeremy Larke Television services



Telephone: 01376 513645

Mobile: 07947 601619

Email: telerepair@aol.com

All Television Systems Catered
for Freesat, Freeview, Sky

- Installations & Repairs To all makes and models
- Full Plasma & LCD Fitting Service
- Wall Mount Brackets Supplied and Fitted
- Aerial & Satellite Dishes Fitted
- Freeview, Freesat & European Channels
- View and Control Your Sky in Other Rooms
- Aerial and Telephone Extension Points Installed



Don't Delay Call Today

Janet C Davies

Dip. F.D. M.B.I.F.D

**BRAINTREE & KELEVEDON'S LADY FUNERAL
DIRECTOR**

Offering a full and Comprehensive Funeral Service

Telephone 01376 339300

For a Personal and Caring 24 hour service

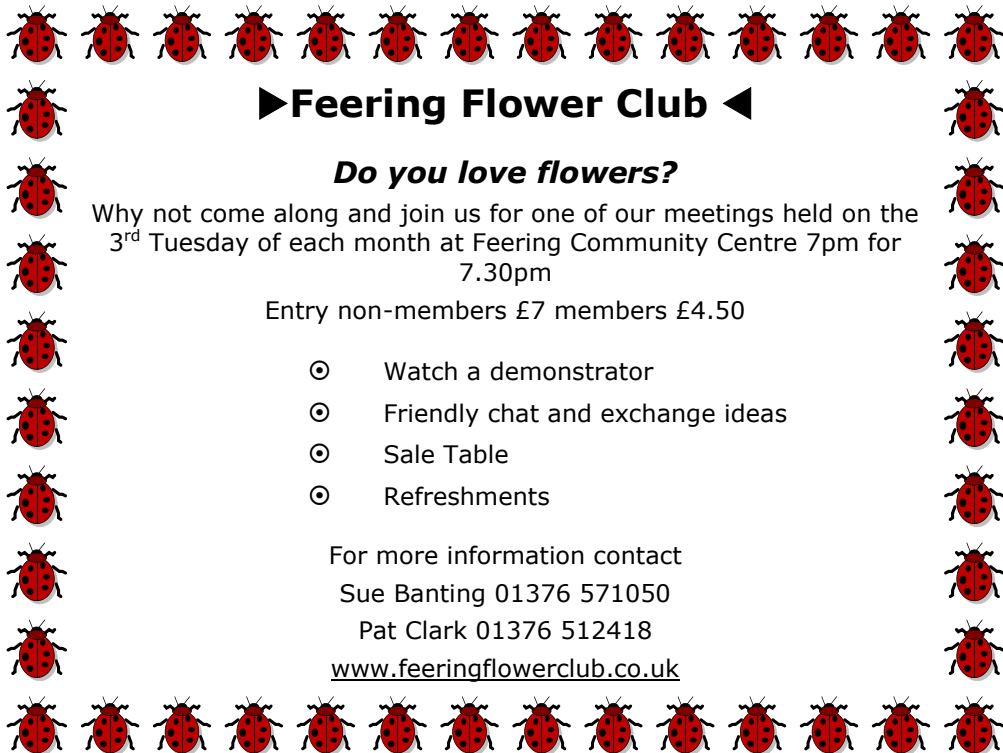
Local Chapel of Rest at Fern House 72 Coggeshall Road Braintree and
Victoria House, Trews Gardens, Kelvedon

Funerals are arranged and carried out in the Traditional Manner but
With 'The Gentle Touch'

Pre payment Plans available—Floral Tributes arranges—Woodland Burials
Bereavement Care—Low Cost Simplicity Funerals - Memorials—Printing
Catering—DWP Funerals

Part of the Hunnaball Family Group

Members of the National Association of Funeral Directors



►Feering Flower Club ◀

Do you love flowers?

Why not come along and join us for one of our meetings held on the 3rd Tuesday of each month at Feering Community Centre 7pm for 7.30pm

Entry non-members £7 members £4.50

- ⊙ Watch a demonstrator
- ⊙ Friendly chat and exchange ideas
- ⊙ Sale Table
- ⊙ Refreshments

For more information contact

Sue Banting 01376 571050

Pat Clark 01376 512418

www.feeringflowerclub.co.uk

DANIEL ROBINSON & SONS

Incorporating
W C BROWN & SONS

Independent Family Funeral Directors & Monumental Masons

A professional, caring, 24 hour service

Private Chapel of Rest

Fleet of air conditioned limousines

Horse drawn funerals available

Traditional and contemporary funeral services to suit your wishes

Funeral pre-payment plans

Arrangements may be made in the comfort of your own home, if preferred

Haslers Lane
Great Dunmow
Tel: (01371) 874518

7 Manor Street
Braintree
Tel: (01376) 320582

31 High Street
Halstead
Tel: (01787) 475533

www.drobinson.co.uk

RIVENHALL GARDENING CLUB

Club members met in Rivenhall village hall on Tuesday 1st April 2023. The evening incorporated the Club's Daffodil Show judged this year by Mr. Robin Crouchman. While he was looking at the entries general notices were given out, there was the usual raffle and refreshments were served. After the judging Mr. Crouchman answered members' questions and gave us the benefit of his knowledge.

**Best Daffodil Bloom
Daffodil Society's
Bronze Medal**

JENNY CLAYDON (2 awards)

**Daffodil Society's Diploma
Miniature Daffodil Cup**

SUSAN DONNELL (2 awards)

Alpine Shield

SUSAN DONNELL

Thank you to everyone who entered and congratulations to Susan and Jenny!

CLUB COMPETITION RESULTS

Horticultural 1st Susan Donnell (one entry)

Domestic 1st Jenny Claydon (one entry)

Flower of the Month

1st Jenny Turner 2nd Bob Turner 3rd Jenny Claydon

Photo of the Month

1st Jenny Claydon 2nd Jenny Turner 3rd Susan Donnell

There will not be a Club meeting in May as Club members will be visiting R.H.S. Hyde Hall Gardens The next Club meeting will be on **Tuesday 13th June 2023** when our speaker will be Peter Miller from Kings Seeds at Kelvedon. We are hoping he will talk about their famous sweet peas and he will be bringing along some artefacts from their collection. Competitions will be: Horticultural — any vegetable. Domestic — Date and Walnut (21b) Loaf. Flower

of the Month. Photograph of the Month. New members and visitors are always welcome — we are a very friendly Club! Entrance is £3 to include refreshment. For further information please contact the Club Secretary on 01376 512781.

Protecting your cycle

Cycles are stolen from many locations including the town centres, transport hubs, residential areas, and educational establishments. Commonly cycles are not secured properly, don't make it easy for thieves: - 1. **Double lock it** - using two locks slows thieves down and makes your bike less of a target. Use two quality locks, at least one of which is a D-lock. Thieves are less likely to carry multiple tools, so use two different types of lock if possible. 2. **Lock the lot** - lock the frame and both wheels to a secure cycle stand. 3. **Secure it** - secure your bike as close to the stand as possible to give any thieves little or no room to manoeuvre. 4. **Take removable parts with you** - Take parts that are easy to remove with you, such as wheels, lights, baskets, or the saddle. Or use locking skewers or nuts which can increase security by securing the bike's components to the frame permanently. 5. **Park securely** - Lock your bike at recognised secure cycle parking. It should be well lit, overlooked and covered by CCTV.

Where do stolen cycles go? A number of places: - some are sold locally, end up in a container abroad, go to another part of the country, or stored in premises for later sale or sold as either a cycle or cycle parts via the internet or third parties.

By taking some appropriate precautions, using good quality security products and using them well, should help you to keep your property safe. Use the best security you can afford. Don't secure a £2,000 bicycle with a £10 lock! As a guide look to spend 10-15% of the value of the item on its security. Look for a "Sold Secure" certified chain **and** padlock or "D – Lock" preferably 'Gold' rated but certainly not below 'Silver'.

Make a note of the frame number, security mark the cycle; there are a number of different methods available such as www.datatag.co.uk, www.bikeregister.com, (others are available and can be found on the Secured by Design website below) and you

can register property including cycles free of charge at www.immobilise.com . Take a photograph of the cycle and any areas of damage or marks of identification, some insurance companies may require a photograph with the cycle owner in the picture with the cycle.

Don't forget security at home: 1. don't leave garage doors open for long periods showing your expensive cycle and other property, 2. consider a "Ground anchor" or "Shed shackle" within your shed or garage to secure your cycle to, 3. look at your shed or garages security and ensure you have good locks and that the hinges are protected, 4. consider a shed alarm.

Check with your insurance company to see what security standards they require for your insurance cover to be valid.

For suitable security products see www.securedbydesign.com or www.soldsecure.com .

For further advice see: <https://www.essex.police.uk/cp/crime-prevention/keeping-vehicles-safe/how-safe-is-your-bike/>, <https://www.securedbydesign.com/guidance/crime-prevention-advice/bike-security> and <https://securityforbikes.com/bicycle-security-advice.php>

RevSAS120423

EV (Electric Vehicle) myths, legends and opinions!

I really enjoyed Peter Hope's account of his electric car experience in a previous magazine. As electric vehicles is a big part of my work it was a pleasure to see such good support, which is the opposite to many articles I read. The naysayers like to inject fear uncertainty and doubt (FUD)! Some of the ways this FUD is perpetuated however, are not intended to be factual, they are simply designed to spread false claims.

There are many reasons for this, oil companies for example, may see electric vehicles (EVs) as a threat to their monopolistic business. Individuals may be concerned by new technologies, and rather than embracing them they try to discredit them. Then there are the social media warriors who re-post the same incorrect information time and time again without checking it.

With plans now in place (in the UK and other countries) to phase

out sales of internal combustion engined (ICE) vehicles over the next 10 to 15 years, perhaps we need to embrace the EV?

I am a convert and currently drive a plugin hybrid vehicle (PHEV), but in pure EV mode most of the time because I do lots of short journeys. My next car will be a fully electric vehicle. The car charges at my home from solar panels.

Why do I like electric vehicles so much? It is my view that EVs are the best choice because:

- the fuel is cheaper (add up a year of fuel receipts and see what you will save)
- I could beat you every time from a standing start (in an equivalent petrol car)!
- there are few moving parts, and the running costs are very low they are so much nicer to drive.

Of course, we need to deal with some issues like the need for more and better EV charge points, but these are improving. In my opinion there are two key reasons why EVs are, inevitably, the future:

1. They are superior in every way to drive. Flat torque curve, smoother, quieter, pre-conditioning (heating or cooling before you get in the car) is easy, and there's much more:-

The efficiency of a pure ICE (Internal Combustion Engine) car, even with all the bells and whistles added to improve performance and reduce emissions, is much lower than an equivalent EV.

We are lucky to get 30% efficiency (how much energy in the fuel is actually used) from an ICE, whereas an EV is at least 60% efficient converting grid electricity to useful energy. A lot of our electricity is now generated by wind and sun, so the result is a much cleaner car with the advantage of almost zero emissions at the point of use.

Little or no losses are measured when delivering electricity via the existing grid infrastructure, but liquid fuel has to be transported in tankers that use diesel. EVs do create more CO₂ during production than ICE but this is very quickly offset during use.

Here is an unusual way of looking at the benefits of EVs. It is a series of questions from somebody thinking of replacing their electric car with a petrol one. It is a good way to consider the pros and cons. Original source lost but my thanks to an unknown Norwegian EV driver:

1. I have heard that petrol cars cannot refuel at home while you sleep. How often do you have to refill elsewhere? Is this several times a year? Will there be a solution for refuelling at home in the future?
 2. Which parts will need to be serviced and how often? The car salesman mentioned a box with gears in it, what is this and will I receive a warning when I need to change gear?
 3. Can I accelerate and brake with one pedal as I do today with my electric car?
 4. Do I get fuel back when I slow down or drive downhill? I assume so but need to ask to be sure.
 5. The car I test drove seemed to have a delay from the time I pressed the accelerator pedal until it began to accelerate. Is that normal for petrol cars? It also seemed to have a slightly slower acceleration. Maybe there was a problem with the car I test drove?
 6. I currently pay about 4 pence per mile to drive my electric car (unless the sun is shining, and it is free). I have heard that petrol can cost up to 10 times as much so I reckon we will lose some money in the beginning. We drive about 15,000 miles a year. Let's hope more people will start using lots of petrol so prices go down.
 7. Is it true that petrol is highly flammable? Should I empty the tank and store the petrol somewhere else while the car is in the garage?
 8. Is there an automatic system to prevent petrol from catching fire or exploding in an accident?
 9. Can I warm the petrol car up or cool it down in the morning before setting off without running the engine?
- I understand that the main source of petrol is crude oil. Is it true that the extraction and refining of oil causes environmental problems, as well as conflicts and major wars, that over the last 100 years have cost millions of lives? Is there a solution to these problems?

Answers on a postcard please!

Very good Tom !! P Hope Editor

Turning the pages of History

Research by Tracy Scott

This month we carry on with the people and their lives that lived either on the London Road (A12) or Rivenhall End. This month we are in Oak Road and looking at the Forge.

The first I learnt about our last 'Blacksmith' at Rivenhall End was through my mother when I was a child with the many tales of how she and my two Aunties would watch him as young children. Of course they watched many of horse having new shoes, but my mother (Dorothy Harvey) was more fascinated when they put the metal around a wooden wheel for a coach or cart and the steam that come off when they put the water on it. Of course in the winter time it was a great place to watch and keep warm.

In the Rivenhall Review of November 1961 they published extracts from an interviews that Mr Turner gave to the 'Braintree and Witham Times' of the 10th Oct 1952 and 30th Sept 1954.

In 1961 when this was published in the Rivenhall Review: Mr Turner's old forge had long been silent and although still standing, is now used partly as a garage and partly as a stable. The forge was a popular meeting place for the retired men of the village and now one can only imagine what news and gossip were exchanged there. Mrs Turner has died and Mr Turner is now ill in hospital. Happily his son is with us and runs the Village Stores.

Rivenhall End Blacksmith

Alfred William Turner

"Now in his 79th year. In his early days as a blacksmith's apprentice, he assisted to shoe the horse of the Royal Mail which travelled along the Roman Road to Colchester.

When Mr Gladstone lived at Braxted Mr Turner owned his present forge and used to shoe all Mr Gladstone's horses."

"Blacksmith Alfred William Turner of the Old Forge, Rivenhall, is one of the few remaining craftsmen of a bygone era. After 52 years in a trade which called for strength and accuracy, he has laid down his hammer, the instrument with which he shod man thousands of horses in his time.

For the centuries old forge at Rivenhall is deserted now. Occasionally Alf walks from his cottage next door into the brick and rafted building. He splits kindling wood on the block before the old anvil. Often too, he gazes wistfully at the silent bellows and the

cobwebs which cover the tools of his trade which hang on the walls. Blacksmithing is dead. No longer do the byways around Rivenhall ring to the familiar sounds; iron on iron, the whoosh of the bellows or the hiss of the hot shoe being tried on the hoof.

The last horse was shod there five years ago. Alf, his be-whiskered face a little sad, told me of the real old days of his trade. He began work when he left school at 12 years of age. He will be 81 on Dec 17th. (1954) His first job was as a cattle boy at Ulting, his native village. He became an apprentice to a blacksmith Mr. George Wood, at Ulting, when he was 16. After his four years training he went to Walton and then to Tolleshunt D'Arcy. He worked at Witham for the late Mr Brockes, then came to Rivenhall in 1901 and brought with him his wife, Alice Gertrude, now 76.

Alfred was the eldest of a family of 16. He retired a few years ago and since has occupied his time with odd jobs. When he first came to Rivenhall, Alf told me one of his jobs was to shoe the horses on the Ipswich – London mail coach run. The coach changed horses at the 'Fox' in those days. 'At that time', he said 'the place was alive with horses. There was always some waiting outside the forge to be shod'.

He also did a little wheelwrighting in the old days, but that trade finished too. He had often been kicked by frisky horses. Once, he said, he was kicked in the middle of the back but this did not keep him long away from the forge.



Alfred Turner above and second right below



Mr and Mrs Turner were married in Witham on the 14th April 1900. They have three daughters and one son. One daughter lives in Yorkshire and the other two at home. The son keeps the 'Off Licence' and Stores in the village.

The tractor had superseded the horse, 'but' Alf said, 'the horse was the best. I would rather see them', and Alf, with feelings."

Oak Road c 1934

Back: Bessy Peas,
Alice Harvey, Violet
Harvey

Front: Kathy Peas,
Dorothy Harvey,
Ronald Peas



This photo was taken
by my Uncle Alf who
lived in the Brown
Row cottage that you

can see on the left and the Forge would be on the opposite side of Oak Road.

Next month we are going to look at the events that happened in Silver End over the years. July will be Village Fetes that happened in Rivenhall. August we glimpse into the life of Mr Harry Wood who lived on the London Road and September we look at the events at the First Rivenhall Gardening Club show 60 years ago.

The Rivenhall Parish Bridge Day at Henry Dixon Hall

A big thank you from the Churchwardens to Ann Riddlestone and her team for organising the Bridge day at HDH. The event raised over £700 for church funds.

The players and behind the scenes at HDH on Monday. 24th April Rector Jane helping in the kitchen and Lillian Pearce on her way to winning the tournament.



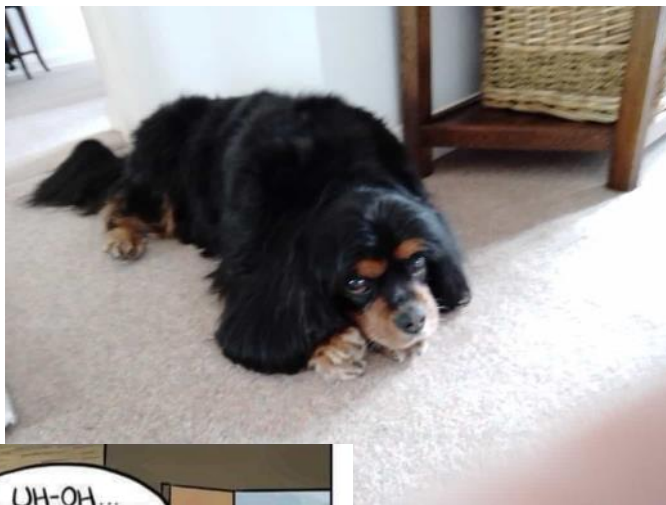
On Palm Sunday Rev. Jane provided a novel way of telling the story of Jesus's entrance into Jerusalem prior to his crucifixion.

Janes Donkey puppet was the star of the show. Definitely a better show than Punch and Judy.



WE HAVE OUR OWN KING CHARLES

Archie thought that as a King Charles Cavalier Spaniel he should be in the magazine this month with the coronation of King Charles on the 7th May.. Its not lost on me that Archie is named after the Kings Grandson ! Or maybe it's the other way round



SONGS FOR AGING ROCKERS LED ZEPPELIN



STAIRLIFT TO HEAVEN

TUESDAY PRAISE
at Witham URC - everyone welcome
MAY 2023

DATE

2nd May

9th May

16th May

23rd May

30th May

LEADER

Songs of Praise

Femi Cole-Njie

Christine Newmarch

Lorna Bantock

Gretta Bray

TIME: 12.30 - 1pm

You are invited to stay for refreshments afterwards.

A pink and white graphic for 'Chimney Chick'. The background features a sunburst pattern. The word 'Chimney' is in a bold, sans-serif font, and 'Chick' is in a large, stylized script font. A black silhouette of a dandelion seed head on a long stem is positioned to the right of the word 'Chick'. The text 'YOUR LOCAL LADY CHIMNEY SWEEP' is written in a bold, sans-serif font below 'Chick'. Surrounding the central text are several service offerings in a bold, sans-serif font, separated by white stars: 'SWEEP', 'SERVICE', 'REPAIR', 'BIRDS NEST REMOVAL', 'CAMERA INSPECTIONS', 'STOVE ROPE', and 'GLASS & BRICK REPLACEMENT'. At the bottom, contact information is provided: 'Call Hayley - 07399 628 527', 'www.CHIMNEYCHICK.co.uk', and 'chimneychick@icloud.com'.

SWEEP ★ **SERVICE** ★ **REPAIR** ★

BIRDS NEST REMOVAL ★ **CHIMNEY Chick** ★ **CAMERA INSPECTIONS** ★

STOVE ROPE ★ **YOUR LOCAL LADY CHIMNEY SWEEP** ★ **GLASS & BRICK REPLACEMENT** ★

Call Hayley - 07399 628 527 www.CHIMNEYCHICK.co.uk chimneychick@icloud.com

COLEMANS COTTAGE FISHERIES

Lakeview Tearooms

Come and enjoy the view whilst
having a bite to eat



Open Thursday to Sunday 9am to 3pm
Breakfast, Lunches
Bar, Snacks
Afternoon Tea
Sunday Roast (01376 516383 to Book)

For more information go to:

<http://www.colemansfisheries.co.uk/witham/cafe/>

Colemans Cottage Fisheries

Little Braxted Ln, Witham CM8 3EX

FREE PARKING 01376 516383

Grow, Flourish. Succeed Academy Nursery



we are pleased to be offering a
nursery school

for children ages 2 years and up.

Each session will cost £10 (£20 for
a full day)

Nursery sessions during term time:

Mornings: 8.45am - 11.45am

Afternoons: 11.45am - 2.45pm

All Day: 8.45am - 2.45pm

If you would be interested in a
place, please email

[nurserysil@connectedlearningmat.co](mailto:nurserysil@connectedlearningmat.co.uk)

[.uk](mailto:nurserysil@connectedlearningmat.co.uk) with your child's name, date of
birth and the sessions and days you
require.

Aerial Photography

Barns

Chimneys

Roof Tops

COST EFFECTIVE, SAFE ACCESS,
ROOF TOP INSPECTIONS BY
DRONE WITH NO NEED FOR
SCAFFOLD, TEMPORARY WORK
OR STRUCTURES REQUIRED.



NON DISRUPTIVE, FAST AND
PROFESSIONAL SERVICE, SAME
DAY REPORTS AND
RECOMMENDATIONS FOR
REPAIRS

FULLY CAA AND CIOB
REGISTERED, QUALIFIED AND
INSURED SERVICE. CARRIED OUT
BY EXPERIENCED SURVEYORS.

Call to discuss your requirements;

Chris; 07817219133

Jim; 07966403783

email: highsightse@gmail.com

Historic Buildings Monitoring

Building Inspections

Estate Records

Organisations in Rivenhall

Clerk to Parish Council	Keith Taylor	516975
Email parishclerk@rivenhallparishcouncil.net	meets every first Tuesday	
End to End Nature Care	Simon Taylor	01621 810141
Gardening Club	Carole McCarthy	512781
Meets on 2nd Tuesday at 7.30pm in Village Hall		
Carpet Bowls	Mick Marshall	512836
Meets every Thursday at 7.30pm in Village Hall		
Playing Fields Association	Mick Marshall	01376 512836
Spread Your Wings Dance Acam	Laura Pearson	01376 741317

Facilities

Hire of Village Hall	email rivenhallvillagehall@gmail.com	
Hire of Henry Dixon Hall	Tracy Scott	571551
Oak Store Rivenhall "Open All Hour" Tel AJ		01376 538838

Organisations in Silver End

Clerk to Parish Council	Mrs B. M. Temple	618464
Email parishclerk@silverendparishcouncil.gov.uk		
Bowls Club	Paul Mann	07551 006906
Children's Centre	Faye Savage	587960
Neighbourhood Police	Braintree Policing Dial 101	
Congregational Church	Sharon Gray	583913
Friendship Club	Maureen Green	585275
Silver End Gad Abouts	Denise Sullens Smith	07952 992782
Gardening Club	Liz Woor	585586
Guiding Group	Carol Hutchings	07857 663959
Neighbourhood Watch	Judy Hill	07896 975839
Scouting Group	Elaine Hall on +44	7885 489788
St Mary's Church (R.C.)	Vivian Phillips	583598
Tennis Club	Jason Cairns	584581
Workers Educational Assoc.	Brian Gillion	583706
Luncheon Club	Helen Thomson	583255
Doctors Surgery		583387
Silver End Heritage Society	Jackie Nesbitt	07707 084608
Silver End United Football Club	Mark Edgell	584639 Web
Site www.silverendunitedfc.co.uk		
Women's Institute	Brenda Warnes	07931 548193
Community Warden	Jackie Windard	07785 515526
Post Office in Co-op - please note that it closes at Lunchtime 1-2pm		
Closes 1 pm Wednesday and 12.30 pm Saturday		
Library: Tues & Thurs - 2pm to 6pm Saturday 9am to 1pm		


HUNNABALL
Family Funeral Services



Here **whenever** you need us

Funerals | Memorials | Pre-paid Funeral Plans

Hunnaball of Witham

Old Bank House, 95 Newland Street, Witham CM8 IYZ

01376 511592

www.hunnaball.co.uk


JANET C. DAVIES
Lady Funeral Directors



**Our Ladies
in Hats**

*"funerals with
a gentle touch"*

Funerals | Memorials
Pre-paid Funeral Plans

Janet C Davies of Kelvedon

233 High Street, Kelvedon CO5 9JD

01376 573691

www.hunnaball.co.uk

DRH LANDSCAPES

Est. 1987

Quality Comes 1st

**Garden Landscape and Design – Hard Landscaping – Soft Landscaping
Grounds Maintenance for Private and Commercial Premises**

- Are you planning to redesign and landscape your garden?
- Does your garden just need a little TLC or a complete makeover?
- Are you looking for assistance with regular garden maintenance or perhaps a one-off visit to get things back in order?
- Is your lawn looking tired? Would you like a new replacement lawn or artificial lawn instead?

We are a family run business with over 30 years of experience working in the ever changing world of landscape management, business regulations and horticulture, with full public and employer liability insurance, as well as being a fully registered waste carrier with the Environmental Agency.



OFFICE: 01376 514142

We welcome...



EMAIL: info@drhlandscapes.com

www.drhlandscapes.com

Harcourt Centre, 77-83 Maldon Road, Witham, Essex CM8 1HP



Proud members of
Checkatrade.com
Where reputation matters